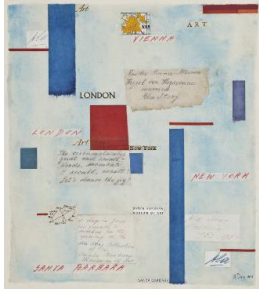


# Basic Report

---



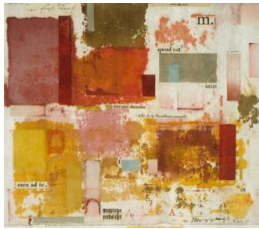
**Title:** Ala's Story  
**Date:** 1971  
**Primary Maker:** William DOLE  
**Medium:** collage



**Title:** Bicycles  
**Date:** 1950  
**Primary Maker:** William DOLE  
**Medium:** ink and watercolor on paper



**Title:** Boats on the Arno  
**Date:** 1955  
**Primary Maker:** William DOLE  
**Medium:** watercolor and ink on paper



**Title:** Et Seq.  
**Date:** 1971  
**Primary Maker:** William DOLE  
**Medium:** paper, watercolor and ink on paper



**Title:** Gifts of the Magi  
**Date:** 1960  
**Primary Maker:** William DOLE  
**Medium:** watercolor and collage on paper



**Title:** Mono Lake #2  
**Date:** 1959  
**Primary Maker:** William DOLE  
**Medium:** collage and watercolor on paper



**Title:** Palms  
**Date:** 1951  
**Primary Maker:** William DOLE  
**Medium:** watercolor and ink on paper

**Title:** Street in Florence  
**Date:** 1957  
**Primary Maker:** William DOLE  
**Medium:** ink and pencil



**Title:** Swordplay  
**Date:** 1949  
**Primary Maker:** William DOLE  
**Medium:** watercolor and ink on paper



**Title:** Tower of Babel

**Date:** 1962

**Primary Maker:** William  
DOLE

**Medium:** watercolor and  
collage on board