

Basic Report



Title: Bean runner whistle
Date: 100-600 CE
Primary Maker: Moche I, Early Intermediate
Medium: ceramic



Title: Blackware stirrup spout vessel in the form of a jaguar frog
Date: 300-400 CE
Primary Maker: Moche III, Early Intermediate
Medium: ceramic



Title: Stirrup fineline vessel with deer design
Date: 500-600 CE
Primary Maker: Moche IV, Early Intermediate
Medium: ceramic



Title: Double spout and bridge vessel with bird /man
Date: 40 BCE-500 CE
Primary Maker: Nasca, Early Intermediate
Medium: ceramic



Title: Blackware stirrup spout vessel with incised design
Date: 400-200 BCE
Primary Maker: Salinar, Early Intermediate
Medium: ceramic



Title: Stirrup spout vessel in the form of a fawn
Date: 2nd century BCE - 5th century CE
Primary Maker: Moche II, Early Intermediate
Medium: ceramic

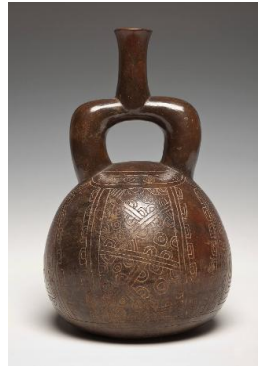


Title: Vessel in the form of a llama

Date: n.d.

Primary Maker: Moche IV, Early Intermediate

Medium: ceramic



Title: Blackware stirrup spout vessel

Date: ca. 900-200 BCE

Primary Maker: Chavín, Early Horizon

Medium: ceramic

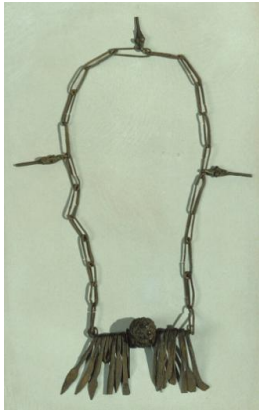


Title: Woman's Hair Ornament

Date: n.d.

Primary Maker: Tibet

Medium: silver, copper, brass, stone, cotton



Title: Diviner's Instrument (Chain with 22 Links)

Date: n.d.

Primary Maker: Baule artist, Côte d'Ivoire

Medium: brass and iron metal